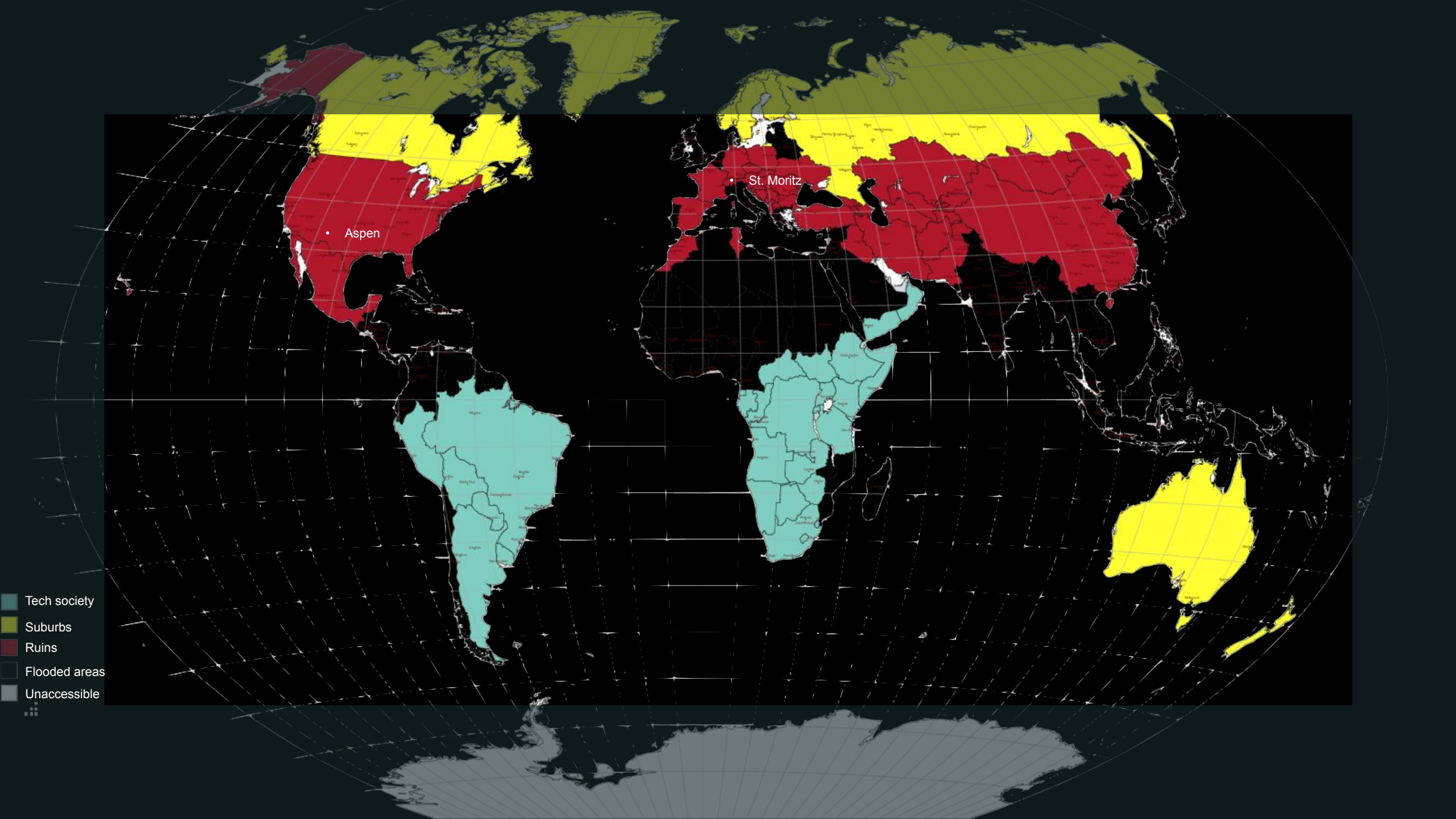


# TIME BOMB

Adira, Blu-Mathilde, Pei,  
Jahan





• Aspen

• St. Moritz

- Tech society
- Suburbs
- Ruins
- Flooded areas
- Unaccessible

Imposed on Asylum-seeking refugees wanting to enter the last cities.  
On a volunteering basis for those who cannot afford to live as they currently do.

**Currently**

50+

**2045**

40+

**2046**

30+

**2047**

18+

Children still

**2048**

**2037**

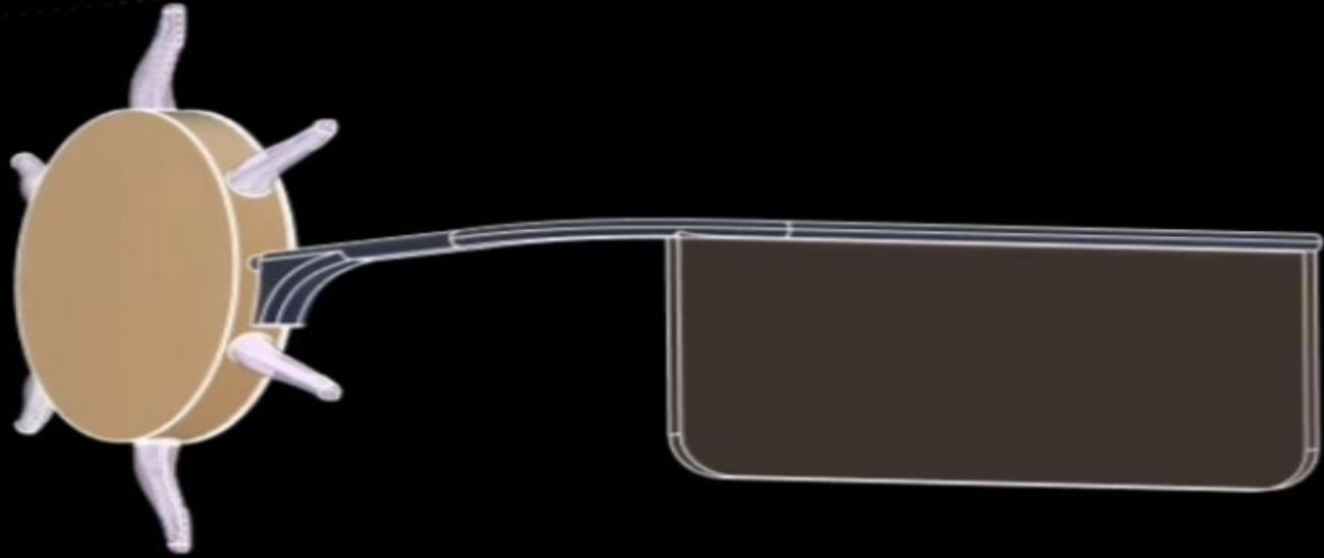
Limited resources/  
food/space.  
Government starts  
fusion experiments.

**Between 2040 and 2045**

Between 2040 and 2045 - discounts for those already fused, resources subsidised, 100% furlough agreement during rehabilitation.

**2050**

All fused by 2050 - Aspen-Cortina enforcement law to fuse the entire population, to be imposed in 2045.



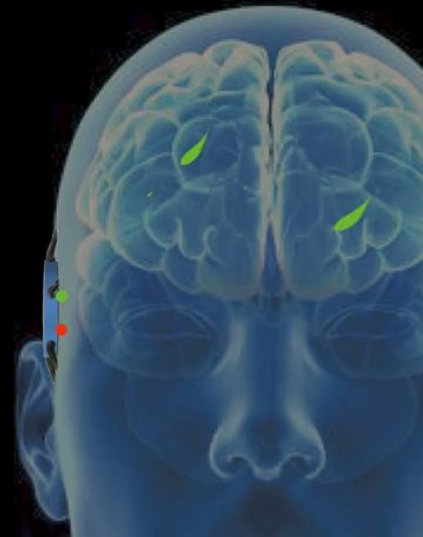
**Micror** ●



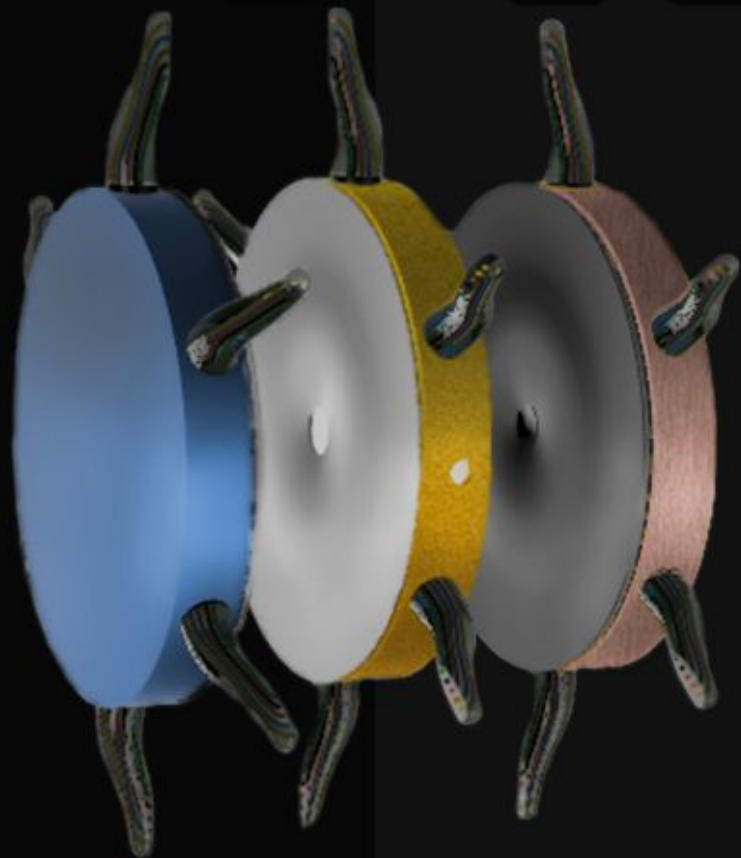


*“I’ve never felt so close to another person!  
By feeling Peggy’s emotions, I can help her when  
she is sad, disappointed, or unbalanced. By  
adapting  
my body to happiness, I can turn her feelings upside  
down. It is like having a personal therapist that acts  
like your best friend! The control you can have over  
your shared body truly gives you superpowers.  
I’m even able to read through Peggy’s eyes when  
I’m too tired to do so myself!”*

(Mars, July 17, 2042)



CHOOSE YOUR FUTURE.



**Mirror** 