



Peixuan Li

Contents



Name: **Peixuan Li (Pei)**
Birth: **Aug. 1996**
Nationality: **Beijing, China**
Bachelor: **Pratt Institute**
Major: **Industrial Design**
Minor: **Sustainability Studies**
Web: **<http://peixli.com>**
Email: **peixuanchina@outlook.com**

An Industrial Designer trained in cosmetic packaging, furniture design, mobility, speculative design, design engineering, and sustainable production.

00

Profile

Peixuan Li, an Industrial Designer graduating from Pratt Institute.

14

Pie Chart Umbrella

An umbrella designed as a prop for flashmob that voices academic injustice.

32

Graxx Folding Stool

A portable folding stool designed for Kongens Have in Copenhagen.

04

LAPUTA Lipstick Set

A magic lipstick set for bringing people comfort and relaxation.

22

Migratory Hostel

A transportable modular system to solve the seasonality problems for hotels.

38

CRAD Rocking Chair

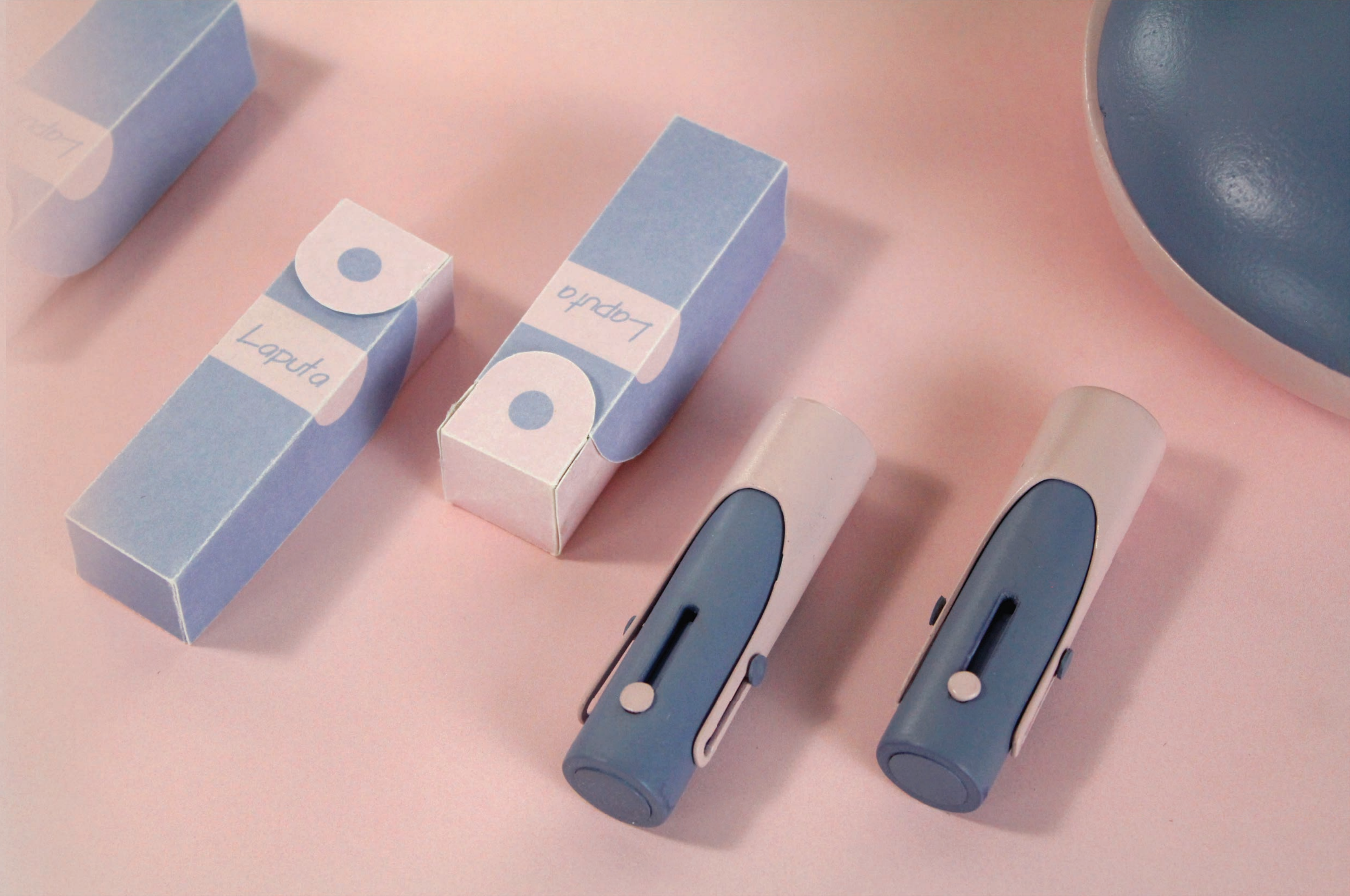
An asymmetrical home rocking chair designed for children.

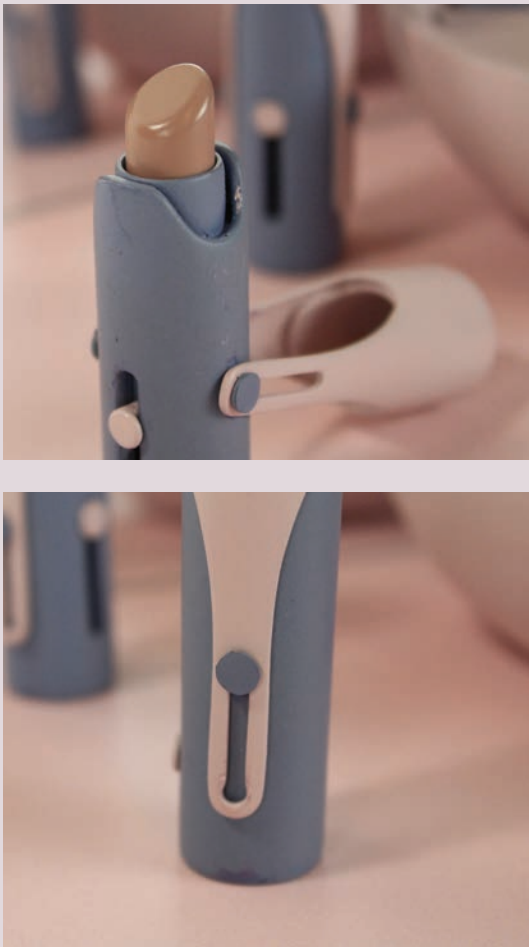
01



LAPUTA Lipstick Set

LAPUTA is a magic lipstick set for bringing people comfort and relaxation. It challenges the traditional way of opening the lipstick, which help the user to open it with only one hand and prevent the cap from falling on the ground. The peaceful color, rounding shapes and playful movement can release the stress.





USAGE



Improve personal profile and raise confidence
Brings happiness and atmosphere
Promote relationship with others
Show identity

LONGEVITY



Resistant to friction
Resistant to falling

PORTABLE



Take less space
Feeling of heaviness
Easy to open
Less twisting friction

SOCIAL RESPONSIBILITY



Recyclable material
Green advertisement

RELIABLE



Right size to prevent lipstick from sliding out
Tight cap

FASHION

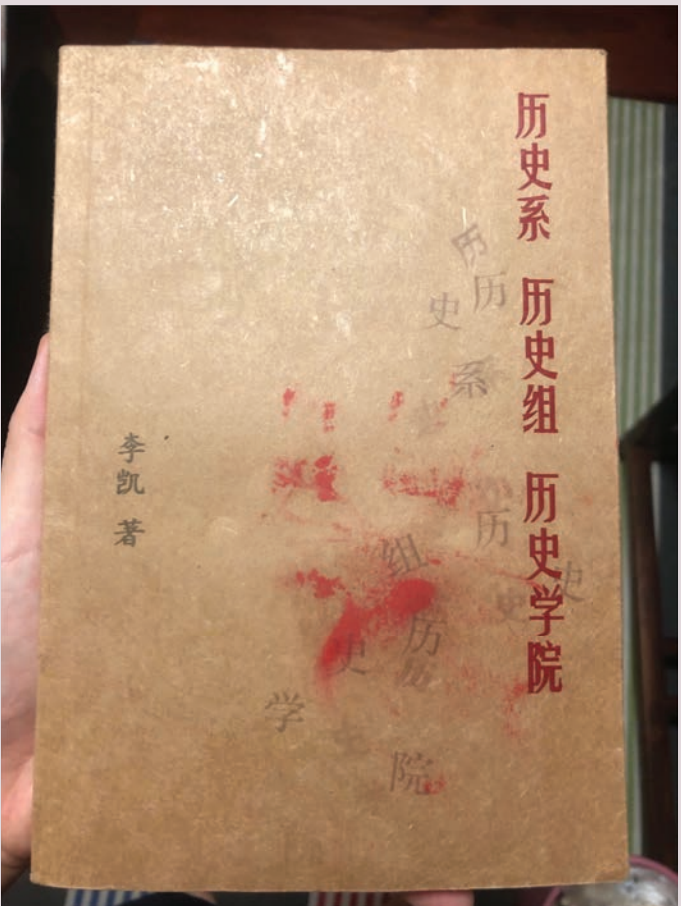


Famous brands
Creative looking
High-end materials like metal.



LAPUTA is a magic lipstick set for bringing people comfort and relaxation. The peaceful color, rounding shapes and playful movement can release your stress. Different from the typical black and red lipstick colors, pink and purple comfort people and keeps people in a good mood.

Customer Needs From Interviews



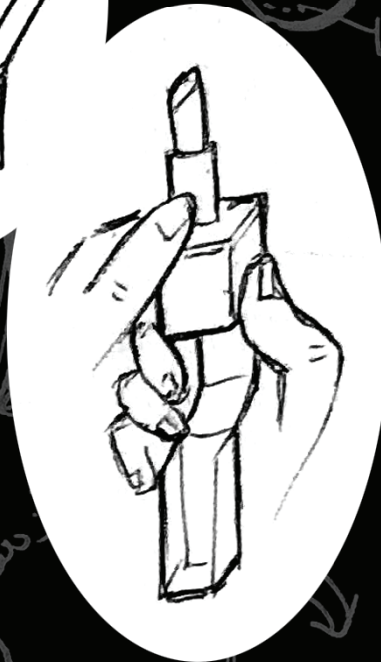
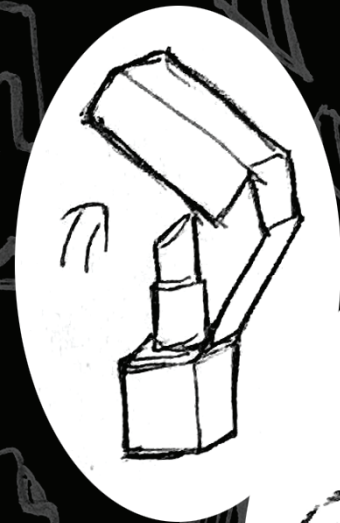
I did an interview of people who uses lipstick and asked them about what factors are more important, and I summerized six main elements that a good lipstick should have.

One of the biggest problems that I saw from the user's cases is: some lipstick caps dropped off in people's bag and the lipstick painted everything red. Redesigning the cap might be necessary.

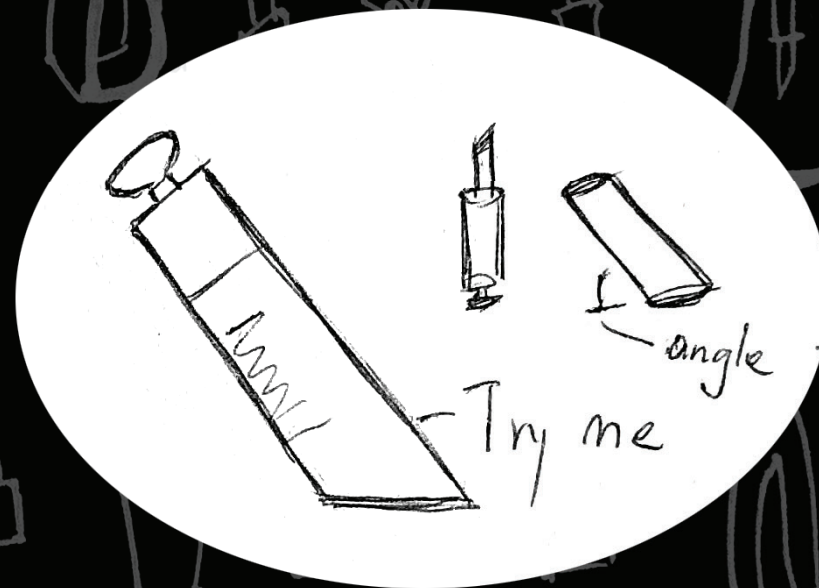
Fashion?



Functionality?



The other ways to open a lipstick?





To begin with, I disassembled some lipsticks to study the mechanism and sketched my idea with chip board.



Then, I made model on Solid-works and printed them with 3D printing. Plastic model that I used at first was not accurate enough, so I used to resin for my final model.



I tested many colors in spray paint. The pink color worked well in spray paint, but I couldn't get the right purple color, so I mixed my own color with acrylic and sprayed it with spray gun.



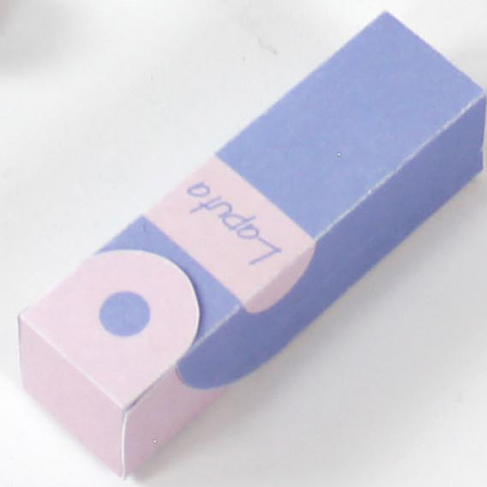
To finalize the model, it took me hours and hours of sanding. I also used laze to shape the body of the mirror, sprayed it with the same color, and glued acrylic to make the mirror.



To open the cap, the user can push it up and rotate it down, and then push the button at the front to use the lipstick. The rotating cap not only prevents the user from dropping and losing caps, but also allows users to play with it unconsciously when they feel stressful. Having the lipstick in your pocket, you can play with it unconsciously when they feel stressful. The connected joint also prevents the cap from being dropped or lost.

The mirror and package repeat the comfortable colors and the rotating concept which makes the lipstick sets both interesting and healing.





O2

学术自由-PIE CHART UMBRELLA

An umbrella designed as a prop for flashmob that voices academic injustice and fights for the right to research, learn and publish. It is a dynamic object that hosts data/ statistics through flexibility in an umbrella. This quotidian object aims to brings access to social values and perspectives in a society to everyday conversation.



FALL 2018



PROTEST FOR ACADEMIC FREEDOM

Academic freedom - The liberty of schools or public officials to learn, teach, research, publish and discuss knowledge. In many countries and societies, academics are affected by many outside forces.

CHALLENGES - HIDE & SHOW

When people realize the injustice, they go on the street and protest for it. However, limitation on academic freedom usually accompanies limitation of freedom of speech. Therefore, academic people face a lot of challenges and has to hide from the restrictions as well as to become spectacular to spread out their information.

UMBRELLA AS PROTEST

Umbrella is an accessible and commonly used object in all cultures. It is an elegant protest prop for academic people to store and use. It is also an object that can be easily folded (to hide) and opened (to show). Umbrella symbolizes protection and shelter, and it can also be a weapon in KungFu movies. In the 2014 Hongkong protest, protestors used umbrellas as defence against police pepper spray because of the function and accessibility.



EXPERIMENT DURING COVID-19

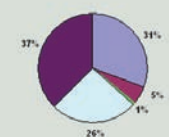
During the COVID-19, I went back China and experienced a 14 days quarantine. As a student who studies abroad, I witnessed a lot of criticism from other peoples who think that we are abroad because we don't love our country, and we only go back home at the time for our personal safty. Therefore, I planed a flash mob to protest for students who study abroad, made our patriotic statement and also to bring positive emotion for the special time. At the moment when we were released from the quarantine, everybody walked out from our room and singed "My Homeland And Me" together. The flash mob was successful and it did draw people's attention, but it was not enough for a serious protest. An ideal academic protest has to have:

Attractive group protest;

Influent as individual;

A prop to contain information.





Media
Business / Interest Groups
Overseas / Public Representatives
Staff
Clients/Other



Requests Granted
Requests Part-granted
Requests Refused
Withdrawn and/or handled outside FOI



Personal
Non-Personal
Mixed

The pie chart umbrella is a props for flash mob that protests academic injustice. The adjustable color area helps the protestors to present the statistic information.

Material: Surface: Polyester fabric Fabric

Joints: Magnet

Handle: Aluminum

Color: Red, Blue & Yellow



Each color can be rotated to 360 degree or folded into a smaller angle. In order to change the color of the pie chart umbrella, users can slightlu pull the fabric to disconnect the magnet on the bottom, and snap it to another position.



FROM INDIVIDUAL TO GROUP

The pie chart umbrella can be used both for individuals and for group events. As individuals, protesters who use the umbrella on the street present their chart everytime when they use it. When people see a lot of them on the street, like fashion outfits, they will be curious and search for further informations.





When there are flashmobs happening, protestors get together and present one common appeal. In this case, they can turn the umbrella into one color and form a pie chart by people's formation. When the event ends, protestors fold their umbrella and fade in the crowd like nothing has happened before.

O3



Migratory Hostel

Migratory Hostel is a transportable modular system to solve the seasonality problems for hotels in order to decrease the waste and maximize the profit.

FALL 2018

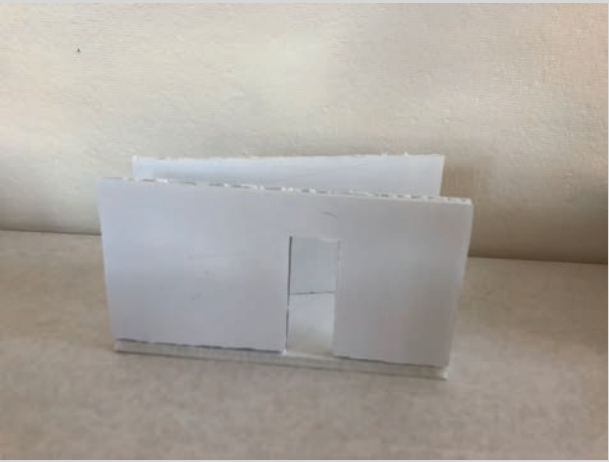




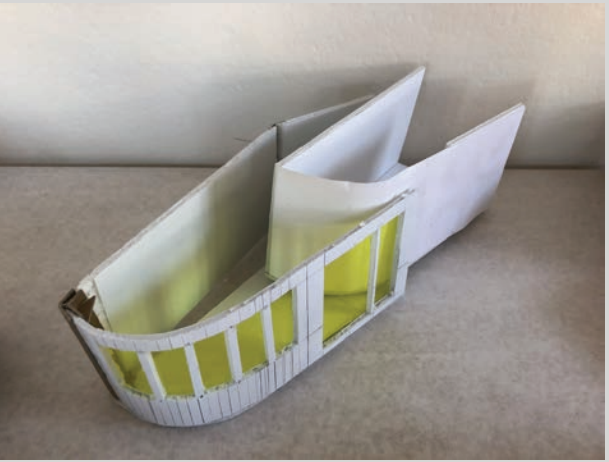
There is a **BETTER FATE**
than a decaying hostel

Where do hotels go after events or during off seasons?

Hotels are strongly affected by seasonality problems. The wastes during off-season causes cash flow, extra revenues, low returns on investment, and reducing rooms causes shortage of capacity in peak season. The picture is an example of Hotel Igman before and after Olympics event.



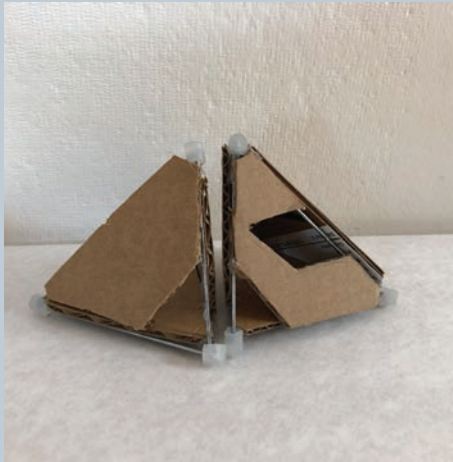
01 Stackable module



02 Avoiding sharp angle with a curve to save space



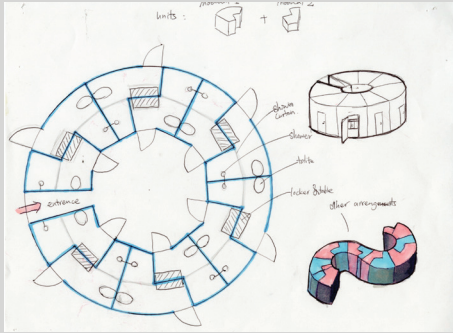
03 Designing the common space in the middle



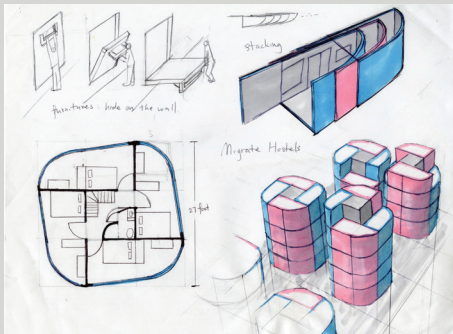
Modularity Problem:
How can rooms be stacked together?



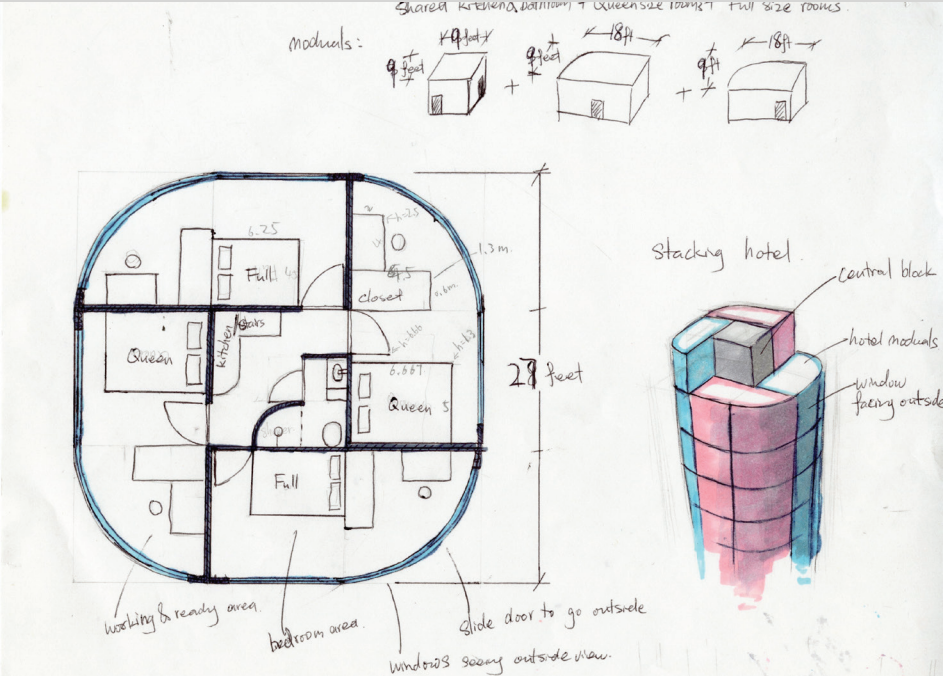
With in the modular system,
how can we fold the furnitures?



Stackable hostel modules that can be transported easily.



Hostel modules with four bedroom and a common space, including staircase and bathroom.



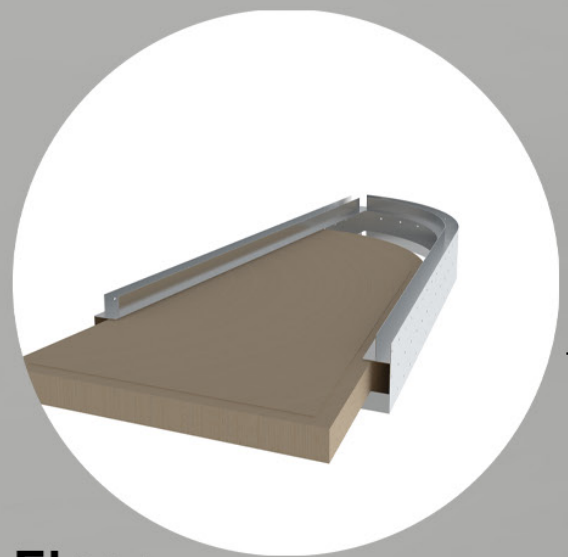
Wall Hinge

Hinge between two inside walls let the shorter wall to be opened so that the modules can be stacked during transportation.



Hinges

Hinges and rods on all furnitures so that they can be folded during transportation and unfold when using.



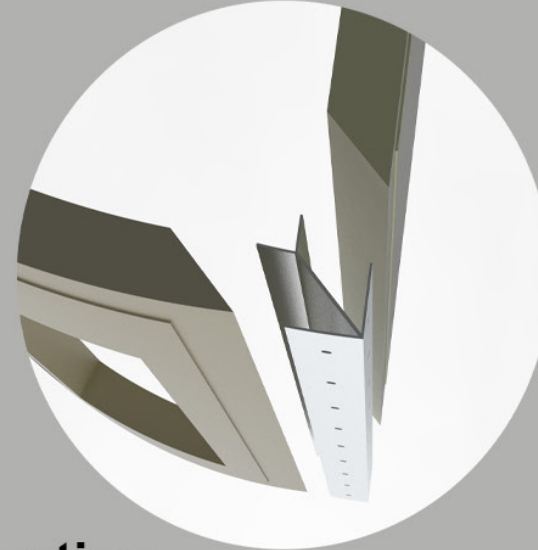
Floor

Floors and ceilings are slid into a frame which also hold the side walls. Then, they are reinforced with screws.



Connection

Wall panels fit in the connections to join together. They are reinforced with screws.



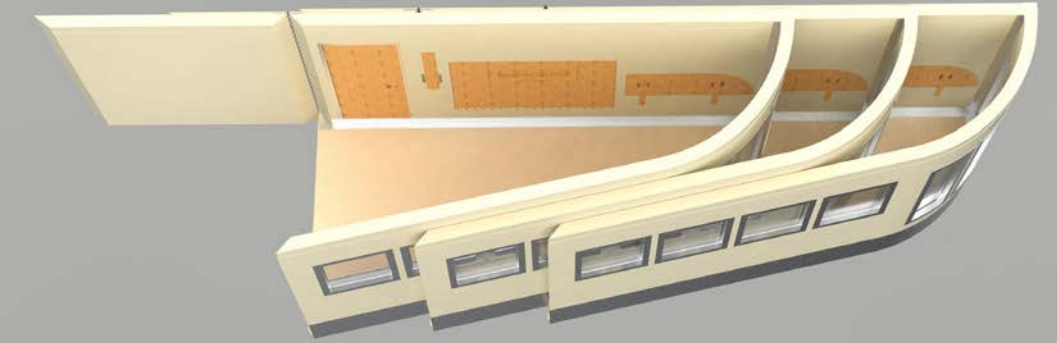
Window

Two ply gorilla glass. High impact strength. Glass thickness is 1/8 and 3/16 which is heat insulated.



Wall panels

Wall panels are made by six inches sandwich panels which has a polyurethane foam panel between two aluminum sheets. It has light weight but high impact strength and thermal insulation. It costs \$5-8 per square meters.



Mobile Hostels transporting from a city to another

The seasonality changes various from different regions based on natural, constitutional and other additional causes. Different regions might have different peak seasons. Therefore, shifting rooms from off season cities to peak season places will reduce the waste and maximize the profit.

Solution: Transportable Modules

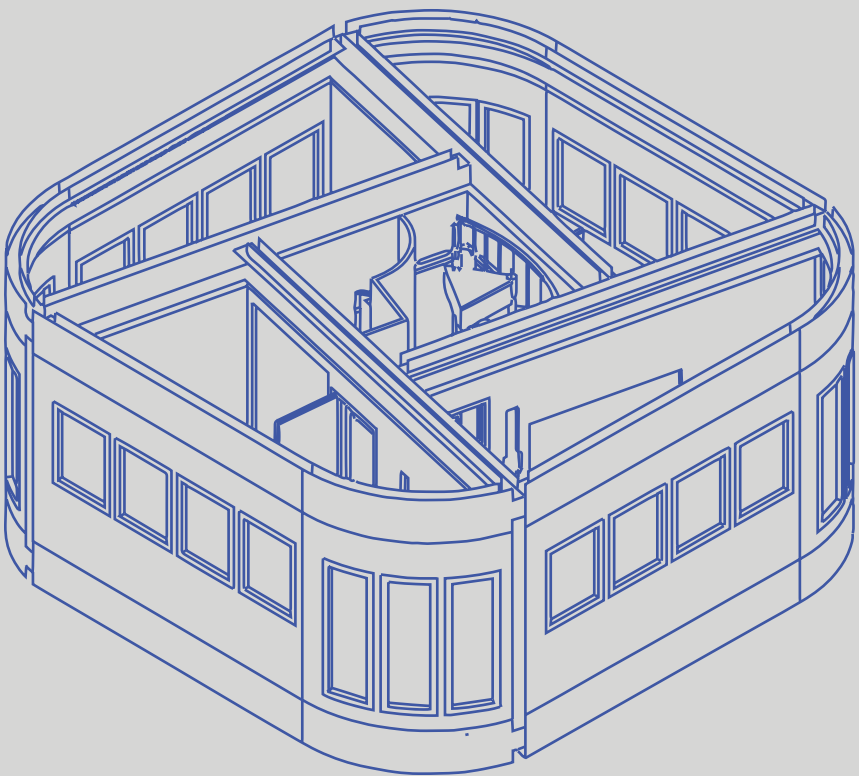
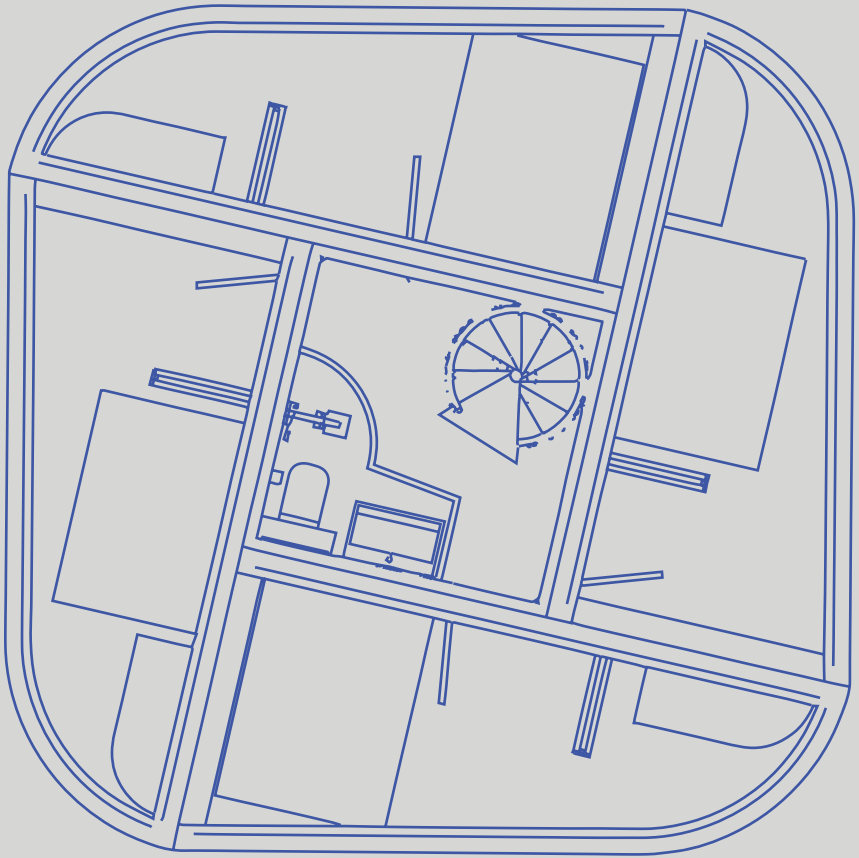
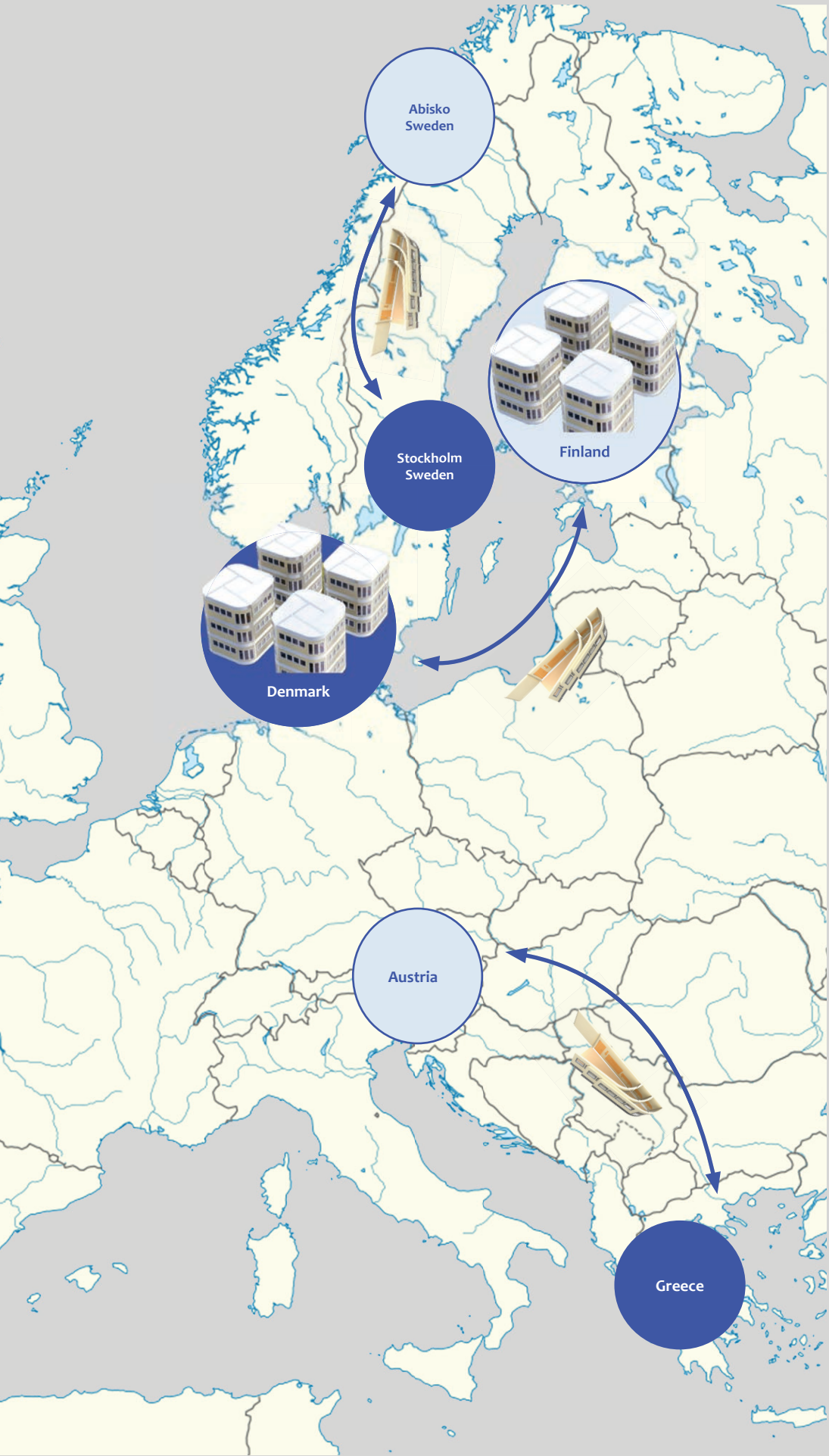
The hostel is made with two sections. The ground floor lobby and the center part bathroom and stairs are not movable. Bedrooms are added around the bathrooms and will be transported when tourism season changes.

Customer: IBIS Chain Hotel in Europe

Among all kinds of hotels, smaller scale hostels are mostly affected by seasonality problems. IBIS is a chain hotel that has more than 1.5 thousand branches all over Europe.

Location: South Europe/Scandinavia

Europe is heavily based on tourism industry. Different countries are compressed in one continent, so they have different seasonality period. They also have consistent policy and convenient transportation for houses to transport.



Transportation: Road/Rail/Maritime

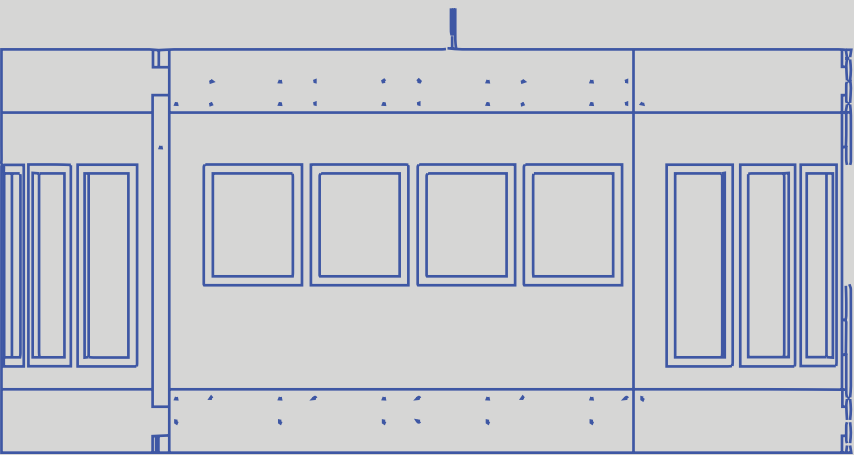
Depend on the distance, the modules will be transported through road, railway or maritime ways. Transporting from Abisko to Stockholm, for example, is 825 miles and will cost \$0.95 per mile.

Size and weight: 9*9*18/5000lbs

To fit standard size to go on the road as well as to save budget, the maximum width of each module is 9 inches, and each module is 9*9*18 cubic feet. A fully assembled room is approximately 5000 lbs.

Pricing: \$50

The rooms will be transported 2-4 times a year. A 53 ft trailer, which cost \$800 to transport each time, will fit 15 modules.





A hotel migrating,

from a freezing silent world,



to another summer...

O4

GRAXX folding stool

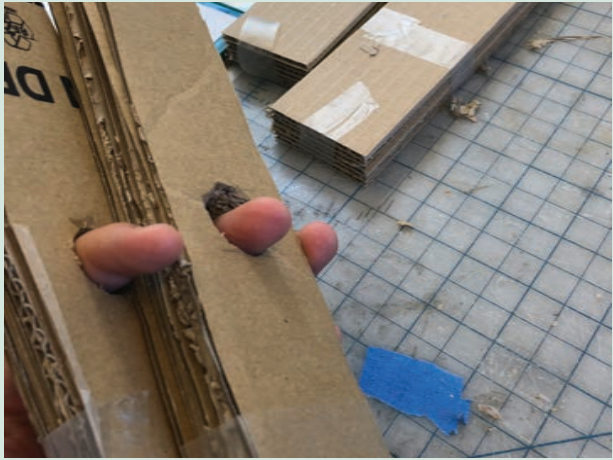
A folding stool designed for Kongens Have in Copenhagen.
Portable for people to carry around and sit in the nature.
Easy to use and easy to clean. An extension of Denmark culture.



SUMMER 2018



Easy to sit, easy to store, easy to go.



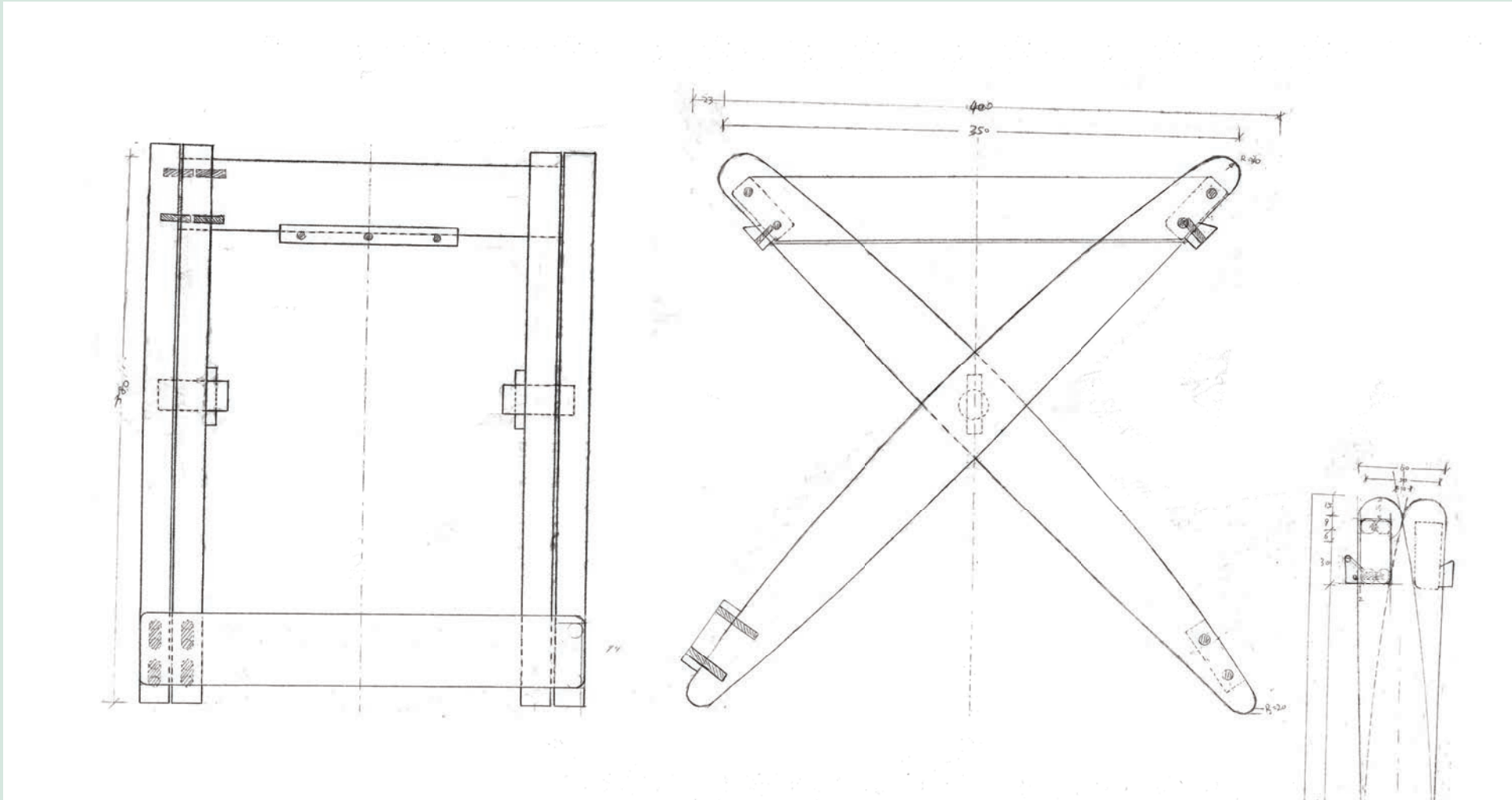
Sketching and making the prototype in actual size with cardboard and paper.

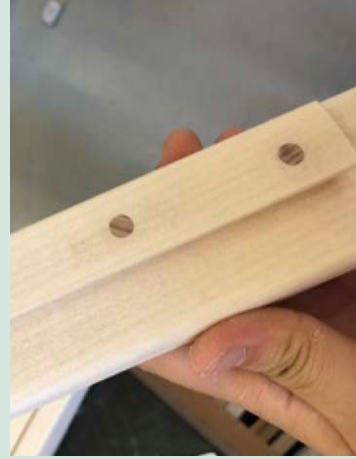
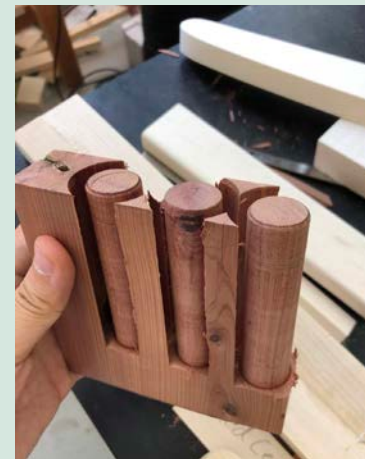


Placing the fabrics and develop the weight capacity by adding supporting dowels in fabric sit.



Going into details, I explored different joints and connections that works the best to support the structure, and adjusted the dimension and curves to improve the aesthetic aspect of the stool.





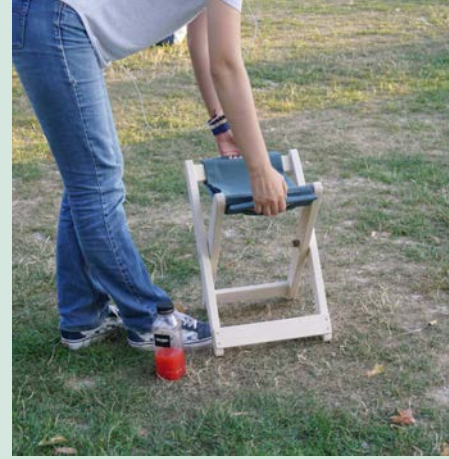
1 Choose lumber and dress them

2 Drill the dowels out

3 Cut the leg shapes

4 Join the hook on the frame with dowels

5 Cut out all parts



01
Place the fabric



02
Enjoy your day



03
Grab it



04
And Go!

6 Drill out domino joints and dowel joints

7 Assemble and dry clamp

8 Glue all the parts in an order

9 Test and adjust the frame and sand it

10 Place the fabric



O5



CRAD Rocking Chair

CRAD is a home rocking chair designed for children. Unlike the other chairs, the CRAD chair is asymmetrical. It provides children more possibilities to explore and have fun with the chair instead of sitting in an upright position.



CRED rocking chair is a symmetrical and allows children to explore fun movement with the rocking chair. The round curves not only gives CRED an attractive appearance, but also make it safe for children to use. The ball shape stops at the bottom of the leg prevent the children falling over and helps them to lean at a safe angle.



By Peixuan Li